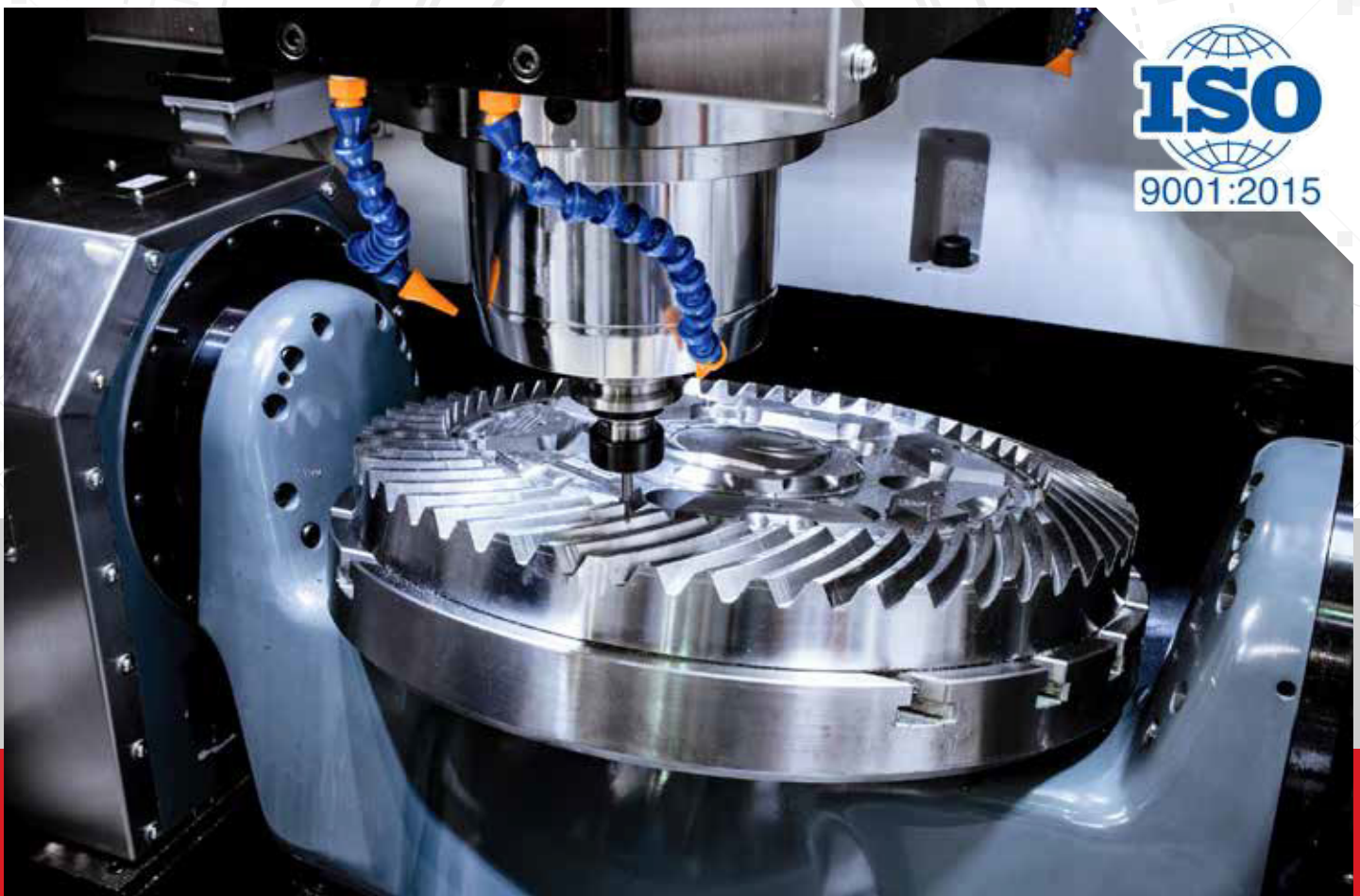




# INDUSTRIAL SOLUTIONS

INNOVATION AND PRECISION



# Our clients





## Your need is our inspiration

Since our founding on August 14, 2014, at Solid Manufacturing, we have established ourselves as a company with more than 30 specialists committed to excellence in every process.

We stay at the forefront through constant training, ensuring mastery of new technologies, machinery, and tools. This allows us to offer high-quality products and services, guaranteeing customer satisfaction.



DUNS Number: 81-282-8092

## Environmental policy

At Solid Manufacturing, we are committed to sustainable development by adopting responsible practices to prevent pollution and optimize resources in our industrial processes.

We incorporate recyclable tools in manufacturing and automation, promoting a culture of environmental responsibility among our collaborators. Additionally, we encourage environmental education inside and outside the company, driving concrete actions to reduce our environmental impact.



## Mission

To meet our clients' needs with customized, innovative, and efficient solutions for the industry.

## Vision

To establish ourselves as a leading company in Mexico, driving continuous growth and expanding our presence in the international market.



# Welding electrodes

At Solid Manufacturing, we offer a wide range of high-quality and precision welding electrodes designed to meet the highest standards across various welding processes. Each electrode is carefully crafted from selected materials to ensure superior performance, delivering consistent and long-lasting results.

## Services:

- New designs
- Replicas

## Materials used:

- Tungsten
- Molybdenum
- Class II and III Copper
- Lanthanum
- Elkonite
- Ceramic



FH-ELE01  
Hook electrode copper  
C2 100% tungsten



FH-ELE02  
Hook electrode copper  
C2 100% tungsten



FH-ELE03  
Pusher electrode copper  
C2 100% tungsten



FH-ELE04  
Vertical electrode copper  
C2 100% tungsten



FH-ELE05  
Cylindrical electrode copper  
C2 100% tungsten



FH-ELE06  
Cylindrical electrode copper  
C2 100% tungsten



FH-ELE07  
Cylindrical electrode copper  
C2 100% tungsten



FH-ELE08  
Cylindrical electrode copper  
C2 100% tungsten



FH-ELE09  
Flat electrode copper  
C2 100% tungsten



FH-ELE10  
Cylindrical electrode  
for rivet copper  
C2 100% tungsten



FH-ELE11  
Cylindrical electrode  
for rivet copper  
C2 100% tungsten



FH-ELE12  
Cylindrical electrode  
for rivet copper  
C2 100% tungsten





FH-ELE13  
Cylindrical electrode  
for rivet copper C2  
100% tungsten



FH-ELE15  
Cylindrical electrode  
for rivet copper C2



FH-ELE17  
Electrode 98% tungsten  
2% lanthanum



FH-ELE16  
Electrode 191435  
100% tungsten



FH-ELE18  
Elkonite electrode 100%



FH-ELE19  
Electrode for welding  
terminal Elkonite copper C2



FH-ELE20  
Copper C2 electrode  
for welding terminal  
tungsten/WLA



FH-ELE32  
100% tungsten  
electrode



FH-ELE21  
External welded  
electrode



FH-ELE22  
Copper C2 electrode  
for EDM machine



FH-ELE23  
Graphite electrode for  
EDM machine



FH-ELE28  
100% tungsten  
electrode



FH-ELE25  
Ceramic for  
welding



FH-ELE26  
Ceramic for  
welding



FH-ELE27  
Ceramic for  
welding



FH-ELE29  
100% tungsten  
electrode



FH-ELE30  
100% tungsten  
electrode



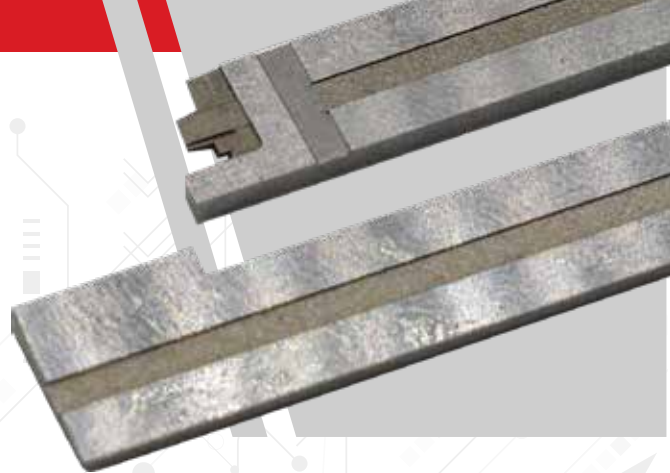
FH-ELE31  
Linear 100% tungsten  
electrode

# Inserts and cavities for plastic injection molds

We offer a specialized line of inserts and cavities for plastic injection molds, manufactured with high-quality materials such as:

## Materials used:

- P20
- Beryllium copper
- S7
- H13
- Stainless steel
- And others



FH-INS01  
Slider insert  
Material S7



FH-INS02  
Slider insert  
Material S7



FH-INS03  
Onix insert movable side  
Material S7



FH-INS04  
Comb insert H13  
Material S7



FH-INS05  
Pallet insert fixed side  
Material H13



FH-INS06  
Onix insert fixed side  
Material H13



FH-INS07  
Comb insert  
Material H13



FH-INS09  
Mold insert  
Material H13



FH-INS10  
Mold insert  
Material H13



FH-INS11  
Mold insert  
Material H13



FH-INS12  
Mold insert - Medical  
product Material H13



FH-INS13  
Pin with figure  
Material H13



FH-INS14  
Core pin  
Material H13



FH-INS15  
Sub insert  
Material Inox 420



FH-INS16  
Sub insert  
Material H13



FH-INS17  
Additional cavity insert  
for medical product  
Material Inox 420



FH-INS18  
Core insert  
Material S7



FH-INS19  
Core insert core bullet  
Beryllium



FH-INS20  
Core insert  
Beryllium copper



FH-INS21  
Central insert  
Beryllium copper



FH-INS22  
Channel  
Beryllium copper



# High-precision tooling

At Solid Manufacturing, we provide a wide range of high-precision tooling solutions designed to ensure superior performance and reliability for your industrial operations.

Our tools help reduce downtime and maximize productivity.

**We work with a selection of high-strength materials, including:**

- Carbide
- D2
- M2
- M4
- CPM10
- A2
- A11
- Stainless steel



FH-HER01  
Cutting stem  
.280 carbide



FH-HER02  
Cutting stem  
.250 carbide



FH-HER04  
Cutting stem  
.135 carbide



FH-HER05  
Pin distributor



FH-HER06  
Spring winder .085  
Material carbide



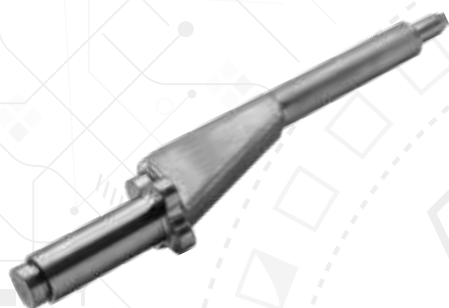
FH-HER07  
Anvil for rivets  
Material A2



FH-HER08  
Anvil for rivets  
Material A2



FH-HER09  
Anvil for rivets  
Material A2



FH-HER10  
Short finger for Grommet expansion  
Material 4140



FH-HER11  
Core CT1520  
Material A2



FH-HER12  
Long finger for Grommet expansion  
Material 4140



FH-HER13  
Dado 5 para conexión  
de estaciones 30 A2  
Material 4140



FH-HER14  
Die 2 for station 20 A2  
Material 4140



FH-HER15  
Die for pressure sensor A2  
Material 4140



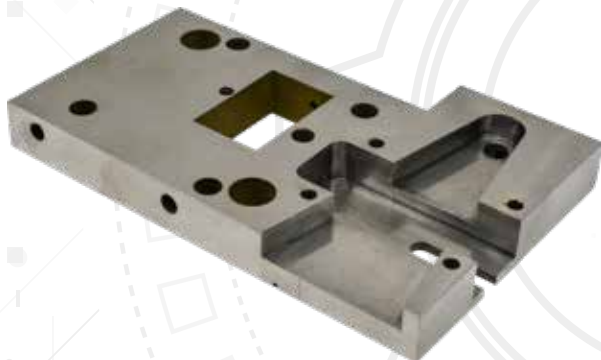
FH-HER16  
Dies for station connections A2  
Material Delrin and aluminum

# Custom fixtures

We design custom industrial fixtures to optimize manufacturing and assembly processes, ensuring precision, stability, and repeatability. Made from high-quality materials, they offer reliable support, high durability, and adaptability to demanding conditions, improving productivity and reducing operation times.

## Materials used:

- A2
- D2
- Aluminum
- And more



FH-FIX01  
Insertion kit  
Material A2



FH-FIX02  
Pull test for Schleuniger tensometer  
Material A2



FH-FIX03  
Pull test for Schleuniger tensometer  
Material 4140



FH-FIX04  
Terminal cutting die  
Material D2





FH-FIX05  
VW alignment fixture  
Material: aluminum



FH-FIX06  
Dowel pin distributor  
Material: M2



FH-FIX07  
Surface mount cup disc  
Material: D2



FH-FIX08  
Clip assembly tool  
Material: aluminum



FH-FIX09  
PCB assembly fixture  
Material: aluminum



FH-FIX10  
Manifold holding fixture  
Material: Aluminum A2



FH-FIX11  
Extraction hood  
Material: aluminum



FH-FIX12  
Welding nest for station 030  
Material: aluminum



FH-FIX13  
Proxi fixture  
Material: Aluminum A2



FH-FIX14  
Clip retention fixture  
Material: aluminum

# High-precision stamping

Our company manufactures advanced high-precision stamping solutions, including holders, dies, punches, die sets, and complete molds. We work with high-quality materials that ensure superior wear resistance and long service life.

## Materials used:

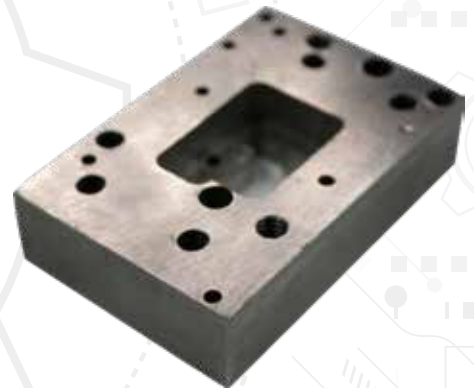
- Carbide
- M4
- M2
- D2
- CPM 10V



FH-TRO01  
Carbide die



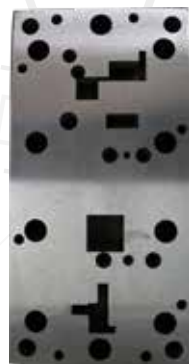
FH-TRO02  
D2 holder



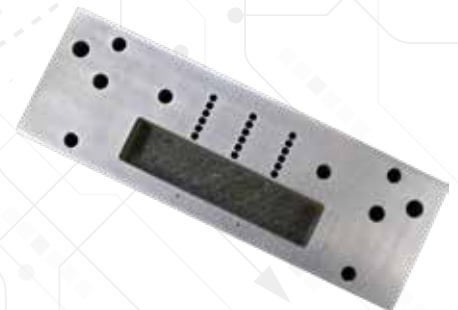
FH-TRO03  
M2 holder



FH-TRO04  
M2 die



FH-TRO05  
Die  
Material: A2



FH-TRO06  
Die  
Material: M2



FH-TRO07  
Die and punch  
Material: M2



FH-TRO08  
Die holder  
Material: A2



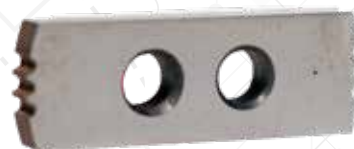
FH-TRO09  
Former  
Material: A2



FH-TRO11  
Clamping tool  
Material: A2



FH-TRO12  
Punch and holder  
Material: A2 D2



FH-TRO15  
Crimping tool  
Material: M2



FH-TRO13  
Punch  
Material: A2



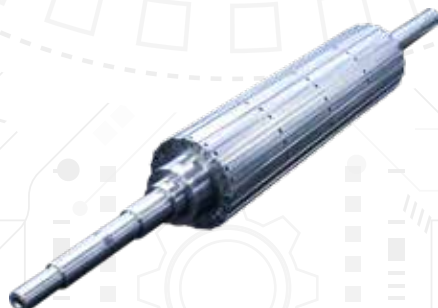
FH-TRO14  
Carbide die



FH-TRO17  
Circular punch  
Material: M2



FH-TRO18  
Die  
Material: M2



FH-TRO19  
Forming roller  
Material: 4140

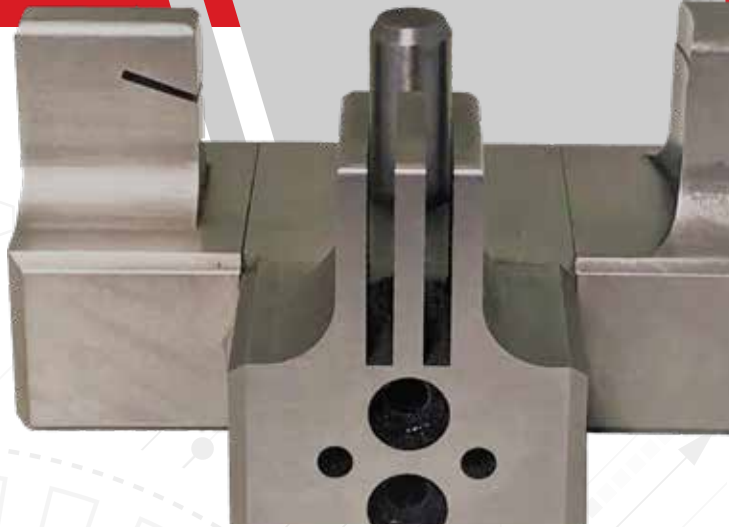


FH-TRO20  
Carbide die punh



# High-precision gauges

Our gauge design and manufacturing service is focused on ensuring accurate and consistent measurements for the industry's most demanding processes. We design custom tools using high-quality materials to guarantee durability and superior performance. Whether for quality control or production verification, our gauges provide precision and reliability in every detail.



FH-GAG01  
Rotor handling  
Material: A2



FH-GAG02  
Micro bottom  
Material: A2



FH-GAG03  
Gauges knock sensor VW  
Material: A2

# High-precision dies for industrial applications

We design and manufacture high-precision dies for various industrial applications, ensuring strength, accuracy, and superior performance under demanding conditions. Our custom solutions optimize efficiency and quality in every project, meeting the highest standards of durability and performance.

## Materials Used:

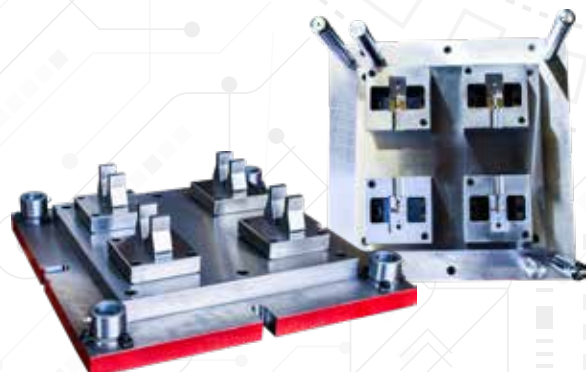
- Carbide
- M4
- M2
- D2
- CPM 10V



FH-DFE01  
Aluminum extrusion mold



FH-DFE02  
Stainless steel extrusion mold



FH-DFE03  
Blades and die set for die-cast parts



FH-DFE04  
Cavity and core for die-cast

# Custom injection molds

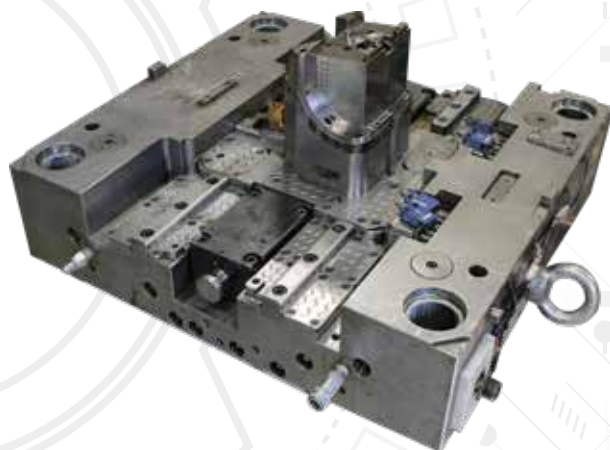
We provide tailored solutions to meet each client's needs, optimizing production processes and ensuring excellent results in various industrial applications. Our molds guarantee high precision, efficiency, and durability in the production of superior-quality plastic parts.

## Materials Used:

- Carbide
- M4
- M2
- D2
- CPM 10V



FH-MIP01  
Aluminum gel mold cavity



FH-MIP02  
Core plate



FH-MIP03  
Plastic injection mold

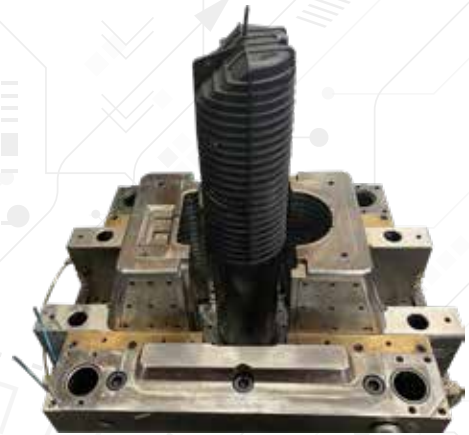


FH-MIP04  
Aluminum mold for gel





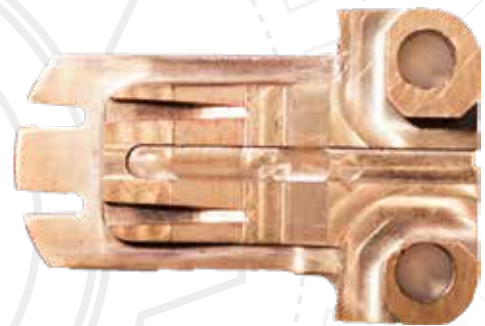
FH-MIP05  
Cavity plate



FH-MIP06  
Mold cavity slide



FH-MIP07  
Mold cavity for medical product



FH-MIP08  
Beryllium copper insert



FH-MIP09  
Core for plastic injection mold



FH-MIP10  
Core for plastic injection mold

# Automation and integration

We design and manufacture automation and industrial integration machines to optimize processes and enhance efficiency across various applications. Our custom solutions are tailored to each client's specific needs, seamlessly integrating systems to increase productivity and reduce operational costs.

With cutting-edge technology and a focus on quality and flexibility, our integrations ensure exceptional performance and greater competitiveness in the industrial sector.



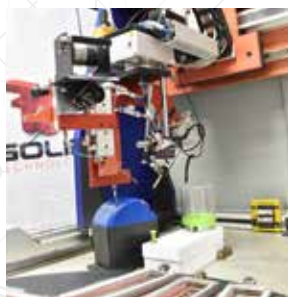
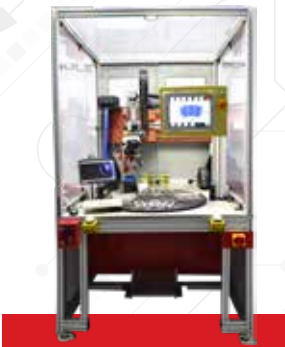
**9F component flame soldering station**



**Stud welding station**

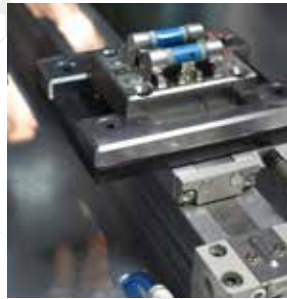
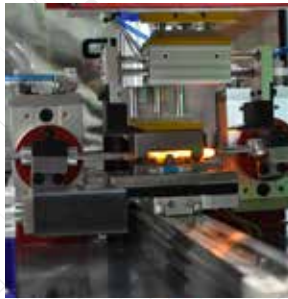


**Tinning station**

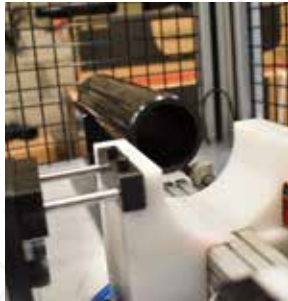




**Flame system fuse cap welding machine**



**T-body shield drilling**



**Induction weftlding erminals to use**



**9F component induction soldering station**



**Spring assembly**





# MRO – Maintenance, repair, and operations

In this section, you'll find everything needed to ensure the optimal performance of your equipment and facilities. We offer a wide range of MRO products, designed to meet preventive and corrective maintenance needs across various industrial sectors.



## Hand and power tools

From wrenches, screwdrivers, and hammers to drills, grinders, and more, ensuring precision and efficiency in every task.



## Industrial consumables

Includes adhesives, lubricants, abrasives, sealants, and other essential supplies for daily maintenance.



## Personal protective equipment (PPE)

Safety for every operation with gloves, goggles, helmets, industrial footwear, and more.



## Components and spare parts

Essential supplies to maintain machinery and systems in optimal working condition.

Each of our products is carefully selected to ensure efficiency, durability, and high performance in demanding work environments. With our support, your company can maximize productivity, reduce downtime, and improve operational safety.





# Manufacturing lines for stainless steel medical products

At Solid Manufacturing, we develop specialized manufacturing lines for the production of stainless steel medical products, ensuring quality, precision, and reliability at every stage of the process.

We adhere to the highest industry standards, guaranteeing that each manufactured piece meets critical safety, durability, and functionality requirements. Accuracy is essential in the medical sector, which is why we implement advanced technology and optimized production methodologies to achieve efficient, repeatable, and consistent processes.



## Design & automation

Custom solutions that enhance operational efficiency and reduce production times.

## High-quality materials

We use medical-grade stainless steel for biocompatibility, corrosion resistance, and maximum durability.

## Resource optimization

Strategies to minimize waste and enhance the performance of every manufacturing line.

## Regulatory compliance

We ensure that our processes and products meet all necessary certifications and industry regulations.



With our expertise, we provide innovative solutions tailored to our clients' needs, enhancing efficiency and quality in medical device production.

# Information display support equipment

We offer information display solutions for professional environments such as meeting rooms, offices, and production lines. Our SmartBoards and digital kiosks improve communication with advanced technology, interactivity, and seamless integration, optimizing collaboration and workflow.

## Self-service kiosk

Kiosco de 21.5" para autoservicio y gestión de filas, con diseño moderno, pantalla Full HD, interfaz táctil de 10 puntos, iluminación LED y opciones como impresora térmica y escáner QR.



Impresora térmica de 58/80 mm



Escáner QR con módulo NFC



LED lighting strip at the base



Panel Full HD original de alta calidad

### Potente motherboard con android o windows integrado

- Android: RK3566, RK3568, RK3399, etc.
- Windows: Procesadores Intel i3, i5 e i7.

### Pantalla táctil capacitiva de 10 Puntos personalización disponible

- Impresora térmica de 58 mm o 80 mm
- Escáner de código QR
- Cámara
- Ranura para POS
- Otros accesorios bajo solicitud

### Available Sizes

- 21.5"
- 27"
- 32"
- 43"
- 49"
- Custom sizes available.

## Smart board

El panel táctil interactivo de 75 pulgadas cuenta con una pantalla con tecnología táctil infrarroja de 20 puntos (compatible con pantalla táctil capacitiva personalizada), ofreciendo una experiencia táctil altamente sensible. Su vidrio templado antirreflejante reduce los reflejos visuales para una mejor visibilidad.

Este panel interactivo de 75 pulgadas incorpora un sistema operativo dual: Android OS y Windows OS.

En Android OS, incluye un software profesional de pizarra digital, y permite la instalación de otras aplicaciones como Zoom para videoconferencias. En Windows OS, cuenta con ranuras OPS para mayor compatibilidad.

### No external computer needed!

The integrated Android system allows teachers and professionals to browse the web, use the digital whiteboard, and share screens effortlessly.

### Specifications

75-inch interactive touch panel, with a screen size of 1750x928 mm and detailed dimensions provided below.



### Designed for learning

Enables teachers to write, erase, and move notes intuitively.

### Accessories

1-year warranty: If a quality issue is detected, accessories or the device can be replaced at no cost.

### Includes

1. Conference machine
2. Remote control
3. Wall mount
4. Writing pen
5. Power cable
6. Electronic manual

A close-up photograph showing a pair of hands working on a complex mechanical assembly. The hands are positioned to install or adjust a large, cylindrical metal component with a flange. Several other similar components are visible in the background, suggesting a production or assembly line environment. The lighting is bright, highlighting the metallic surfaces and the precision of the work.

**Services**

# Kitting

## Services:

Kitting is used to gather items or components into a single kit. The contents of the package will depend on the specific needs of each sector:

### Automotive industry:

Kits may contain items such as nuts, bolts, and screws, either pre-assembled or as individual pieces.

### Aerospace industry:

These kits can include anything from mechanical parts to specialized electronic components.

### Electronics industry:

Kits typically include resistors and capacitors, with parts shipped in a single package.

### Food & beverage industry:

Workers in this sector require supplies like spices or flavorings, which are sent in a specialized kit.

### Healthcare industry:

These kits usually contain anything from surgical instruments to emergency medical supplies.

### Retail sector:

Kits include everything from accessories to complete products, streamlining order preparation and shipping.

## The importance of kitting in manufacturing

Kitting services offer several advantages. Here are the four main benefits:

### Simplification

Once the kit is prepared and sent to the production line, assembly is carried out with all the necessary components in place.

### Efficiency

The kitting logistics system reduces the time required to gather production components, streamlining the pre-assembly phase.

### Quality assurance

Kitting also serves as a quality control system, ensuring that all necessary elements are present in each kit.

### Inventory management

Kitting logistics improve inventory management by reducing the number of SKUs stored in the warehouse.



# Preparation for UL certification

## Guaranteed safety and reliability

At Solid Manufacturing, we ensure compliance with the highest quality and safety standards in every one of our processes. Our UL certification guarantees that our products and solutions meet international regulations for electrical safety, reliability, and performance.

### Why Choose UL-certified products?

- Compliance with international standards
- Enhanced safety and reliability in every application
- Risk reduction in industrial environments
- Guaranteed quality and durability

With this certification, we reaffirm our commitment to providing engineering solutions that meet the market's most stringent requirements, giving our clients the confidence of working with products backed by one of the world's most recognized certifications.



## Services

# Training

- ◆ Initial Evaluation: We analyze the specific certification requirements based on the industry and product.
- ◆ Technical Training: We provide detailed instruction on UL regulations, materials, manufacturing processes, and safety testing.
- ◆ Testing & Validation: Laboratory tests are conducted to ensure compliance with safety and performance standards.
- ◆ Audit & Compliance: We review production processes to align them with UL regulations before final certification.
- ◆ Certification Maintenance: We offer ongoing support to ensure continued compliance with UL standards over time.

With our training, your company will meet UL (Underwriters Laboratories) requirements, obtaining a key certification for access to international markets while ensuring the safety and reliability of your products.



## Services

# Sorting

Our goal is to help you detect defects and quality issues in production before they reach your final customer. With this service, we can help you control all potential failures that your production lines may have:

- Reduce customer complaints
- Prevent line stoppages
- Avoid downtime
- Increase economic profitability
- Enhance credibility and competitiveness

We can design and manufacture any type of tooling and assembly line to carry out any sorting process, regardless of its complexity.



## Services

# Rework

At Solid Manufacturing, we understand that precision is key in the manufacturing industry. Our Rework Service is designed to correct, adjust, and improve components that do not meet the required specifications, optimizing processes and reducing production costs.

We utilize cutting-edge technology and a highly qualified team to modify defective parts, eliminating waste and ensuring the highest quality in every component. Our approach is based on efficiency, guaranteeing that each reworked piece meets the industry's most demanding standards.

## Benefits of Our Rework Service

- ✓ Defect correction without the need to manufacture new parts.
- ✓ Cost and waste reduction in production.
- ✓ Process optimization and improved delivery times.
- ✓ Quality assurance in every component.

Trust our experience and commitment to excellence to keep your production running smoothly.





## Software development

Custom Enterprise Software with innovative solutions, modern design, and the best usability analysis.



### Creating enterprise software solutions.



We create custom enterprise software solutions with innovative solutions, modern design, and the best usability analysis to meet customer needs and requirements.



#### Web development

We develop all types of websites, from complex corporate-oriented sites to customer-focused designs, ensuring adaptability to any device.



#### Mobile applications

We develop Native and Cross-Platform Applications for iOS, Android, and Windows Mobile.



#### Desktop applications

We develop applications for Windows using the latest technological tools and best practices.



#### Databases

We help you organize raw data in the most efficient way for analysis and decision-making.



#### API integrations

We use API-based development to seamlessly integrate custom software with third-party corporate systems and services.



# SMT Solutions innovation & precision in every detail



**Conveyors**



**Automatic splicing machine**



**Dispensing equipmen**



Our dispensing equipmen are designed to work with:  
**epoxy, adhesives, greases, pastes & more**

**Racks for magazines & ESD cart**



**Nozzles**



**Fedders**



**AGV magazine loader  
& unloader  
SSLXSR-3200R**



**Stencil cleaning SPI  
SS305SWM**



**Automatic nozzle  
cleaning machine**



**Conformal coating  
removal  
CRYSTAL MARK**





## Industrial solutions innovation & precision



**Wilfredo Fonseca**  
General Management  
wfonseca@solid-mfg.com  
+1 (915) 777.1333



**William Félix**  
General Management  
wfelix@solid-mfg.com  
+1 (915) 777.0739



**Ramón Aguilar**  
Sales Manager – Cd. Juárez  
raguilar@solid-mfg.com  
+52 (656) 144.5502



**Maros Espinoza**  
Sales Manager – Cd. Juárez  
mespinoza@solid-mfg.com  
+1 (915) 777.0766



**Alan Santiesteban**  
Sales Manager – Cd. Juárez  
asantiesteban@solid-mfg.com  
+52 (656) 345.5806



**Diego González**  
Sales Manager – Cd. Juárez  
dgonzalez@solid-mfg.com  
+1 (915) 999.3434



**Heriberto Huerta**  
Sales Manager – Sonora  
hhuerta@solid-mfg.com  
+52 (662) 417.6320



**Enrique Torres**  
Sales Manager – Jalisco  
etorres@solid-mfg.com  
+52 (33) 1974.5755



**Francisco Zamudio**  
Sales Manager – Hermosillo, Sinaloa & Durango  
fzamudio@solid-mfg.com  
+1 (915) 343.2203



**José Pérez**  
Sales Manager – Chihuahua  
jperez@solid-mfg.com  
+52 (656) 388.1220



**Johanny Jacome**  
Sales Manager – Coahuila, N.L. & Tamaulipas  
jjacome@solid-mfg.com  
+52 (81) 2080.8334



**José Luis Díaz**  
Sales Manager – Tijuana  
jdiaz@solid-mfg.com  
+52 (656) 754.2302



**Saúl Ramírez**  
Senior Electromechanical Engineer  
sramirez@solid-mfg.com  
+1 (915) 777.1175



**Jaime Chavarria**  
Field Service Engineer  
jchavarria@solid-mfg.com  
+1 (915) 777.1136



**Emiliano Zamudio**  
Field Service Engineer  
emiz@solid-mfg.com  
+52 (656) 806.7193



**José Luna**  
Field Service Engineer  
jluna@solid-mfg.com  
+52 (656) 345.5796

## Offices in Mexico and the United State

### Offices in Mexico

#2225 Parque Industrial  
Fernández C.P. 32649  
Cd. Juárez, Chih. Méx.  
Tél. +52 (656) 624.1530

### Offices in the U.S.A.

1410 Gail Borden C-4  
El Paso, TX. 79935  
Tél. +1 (915) 300.2401

### More information:

info@solid-mfg.com  
www.solid-mfg.com

